



ANNUAL REPORT

2019-2020



From the Secretary's Desk	1
Milestones	2
Sampark- Overview of Projects	3
Project Focus : Women	5
1. Women Co-operatives in Koppal	6
2. Women SHGs in Varanasi	7
3. Entertainment Sector Workers, Nepal	10
Project Focus : Migrant Construction Workers	11
1. Workers Resource Centres	12
2. Interventions	13
3. 2019-20 Highlights	14
Project Focus: Children of Migrant Construction Workers	15
1. Health & Nutrition	17
2. Education	18
3. 2019-20 Highlights	19
4. Journey of Sampark Creches	20
The Way Forward	21
People Who Support Our Work	22
Sampark Team	23



From the Secretary's Desk

As Sampark enters its 30th year of operations, I am proud to share that, over the years, we have reached out to more than 20,000 women, 26,772 migrant workers and 8,626 children. Sampark's efforts towards advocacy have been consistent for the last 30 years. Sampark has highlighted issues of women, migrant workers and children with Women and Child, Health, and Labour departments from time to time. This year, the organization's hard work was acknowledged when the Karnataka Labour department signed an MOU with Sampark to run five creches for the children of migrant workers. Another big milestone was the registration of the Karnataka Kattada Shramikara Sangha, a union of construction workers in Karnataka.

Sampark's hard work was appreciated and acknowledged this year by the Electronics and Radar Development Establishment, Defense Research and Development Organization (DRDO), when they invited me as the Chief Guest for their International Women's day celebration. They were very inspired to hear the story of Sampark and its women's empowerment work over the past 29 years.

In March 2020, India came under the grips of the Covid-19 pandemic. The lock down and the resulting loss of wages, jobs and sense of security created huge anxiety and uncertainty for the people living on the margins. Struggling to make ends meet and with the future looking grim, daily wage earners were worst affected.



Dr. Smita Premchander

SAMPARK
FOUNDER, SECRETARY

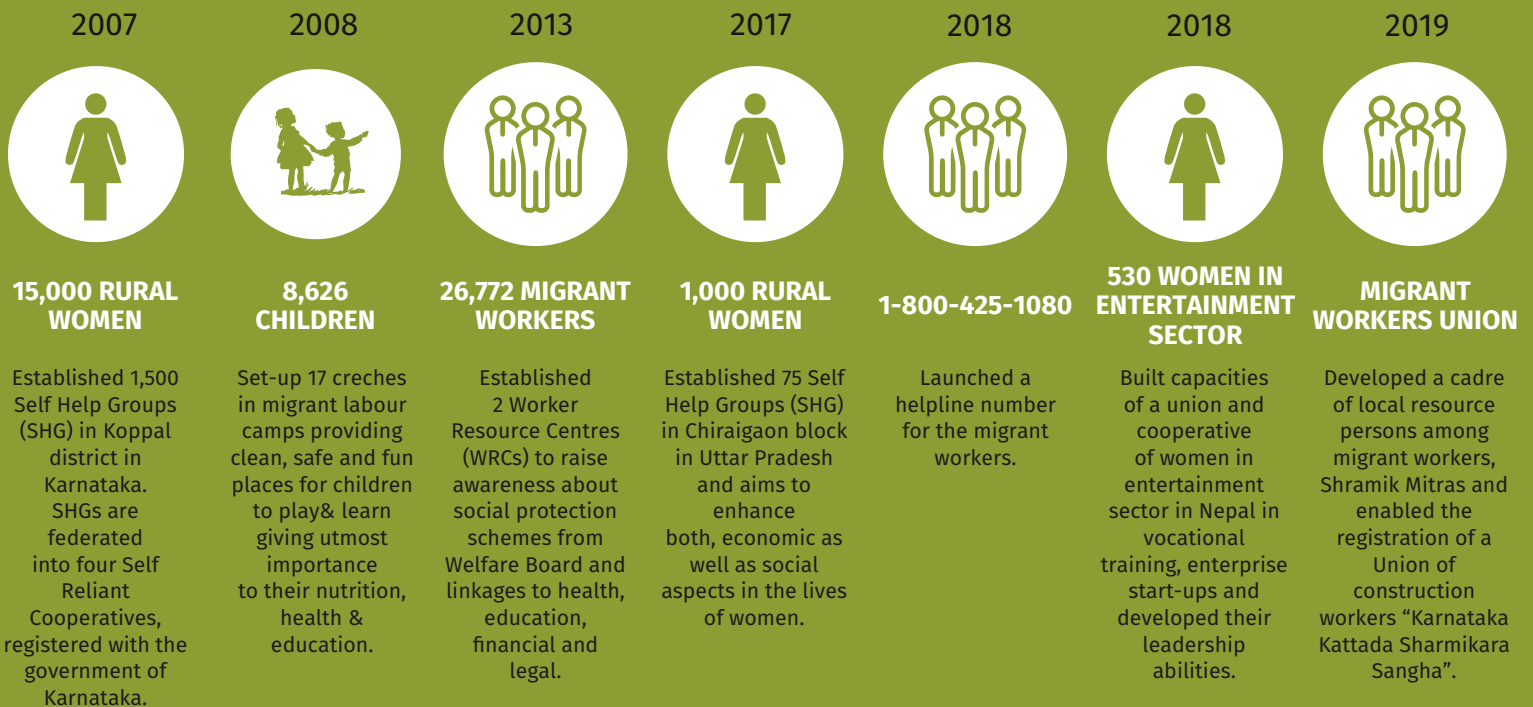
These testing times brought out the real strength of the Sampark team, who stepped up to meet the vision of Sampark **"to help vulnerable and poor people, especially women, to gain direct control over and improve their lives"**.

I would like to sincerely thank all the staff for their relentless work, ownership of Sampark and their contribution to the lives and livelihoods of vulnerable people.

I take a moment to thank our board members for being there for Sampark through the years, providing valuable inputs and for leading Sampark in the right direction.



SAMPARK MILESTONES



Board Members

Dr. Kiran Rao - President

Ms. Neena Paul - Vice-President

Dr. Smita Premchander - Secretary

Mr. Chiranjiv Singh

Ms. Madhu Singhal

Ms. Chinnamma Kuttappa

Mr. Suresh Raghavan

Mr. Ashoke Chatterjee

Ms. T.M. Sujatha

Mr. Suryamani Roul

Mr. Reghu Ram Das

Mr. Mahesh Madan Bhatt

SAMPARK - OVERVIEW OF PROJECTS



1 WOMEN

An Indian organization based in Bangalore, Sampark was established in 1991. In 1997, Sampark initiated small and informal associations of women in Koppal on principles of self-help and collective responsibility. It has helped in establishing 7 self-reliant credit cooperatives which presently constitute 4 cooperatives working under its strategic supervision. These cooperatives are currently profit-making, and are sustainable organizations compliant with the Karnataka Souharda Sahakari Act, 1997.

In 2017, Sampark launched the "Women Empowerment Project" in Varanasi, to replicate the success achieved in Koppal. Implemented in partnership with the Rajghat Education Centre of the Krishnamurti Foundation of India, the project covers 12 villages in Chiraigaon block of Varanasi district. The project has offered a collective and safe space where about 900 women learn to manage pooled finances, meet their consumption and emergency credit needs, and invest in income-generating activities.

As devadasis form one of the most vulnerable sections among the poor, Sampark has provided special support to them and their children for several years. In coming year, Sampark will not only contact devadasis and institutions again for a review of their current livelihood challenges but also communicate these to the government so that government schemes can be designed to be more responsive to the needs of this group.

Empathy towards underprivileged women also led Sampark, since 2018, to work with women in Nepal who have been trafficked, have faced abuse, or who work in the entertainment sector. In partnership with NGO Raksha Nepal, Sampark has empowered women survivors of Gender-Based Violence (GBV) and trafficking to be more aware of gender, financial literacy, and enterprise development. Sampark has also strengthened two collectives of these entertainment workers, a union of 4,000 members, and a financial cooperative of 700 members. These four projects amplify Sampark's focus on the livelihoods of women while building their organizations, both very critical pathways towards achieving women's empowerment.

SAMPARK - OVERVIEW OF PROJECTS



2 MIGRANT WORKERS

In 2013, Sampark launched "Empowering Migrant Construction Workers" project. Sampark works across 40 labour sites in Bengaluru, provides information through a dedicated migrant support helpline and operates 2 Workers Resource Centres (WRC). The project empowers migrant construction workers to raise awareness of their rights and enhances access to their entitlements in the areas of health, education, financial inclusion, social and legal. Migrant workers and their children are linked to government social protection schemes, government hospitals, public health centers, child care centers and schools.

3 CHILDREN OF MIGRANT CONSTRUCTION WORKERS

In 2007, Sampark launched the "Early Childhood Care Project" to support the children of migrant construction workers. Sampark currently runs 17 creches in various labour colonies in Bengaluru to provide care, safety, health and education for children of a highly mobile population and helps children develop into competent and confident individuals. Sampark has facilitated the admission of children over 6 years into government schools and childcare centers. Creches support mothers with childcare duties and enable their participation in labour market.

NUMBER OF BENEFICIARIES (CUMULATIVE)

20,000
women

26,772
migrant workers

8,626
children



Project Focus: Women



WOMEN COOPERATIVES IN KOPPAL

Since 1997, Sampark's women's economic empowerment activities have supported the setup of over 1,400 Self Help Groups (SHGs), involving 15,000 poor (including devadasis) women in Koppal in North Karnataka, India. These women gather weekly to save money and avail loans. The SHGs are federated into four Self Reliant Cooperatives, registered with the government of Karnataka. Sampark enabled the formation, registration, capacity building, and financial linkages of these organizations. Women organize the General Body Meeting and prepare the annual report and audit reports. Sampark trains women in order to maintain cash books, account ledgers, fixed and recurring deposits, and reconciliation of accounts and dividends. Women approach federal courts and police departments for their support to collect the overdue loan payments.

FINANCIAL OVERVIEW

Name of cooperative	No. of block	No. of villages	No. of SHGs	No. of members	Share amount in Rs. (lakhs)	Loan outstanding in Rs. (lakhs)
Eshwara	02	23	177	2,469	21.3	51.2
Gavisiddeshwara	02	21	112	1,580	15.8	21.3
Sadhana	02	19	168	2,000	28.3	69.1



SADHANA CO-OPERATIVE INAUGURATED THEIR NEW OFFICE BUILDING. WOMEN NEGOTIATED WITH THE GOVERNMENT TO PROVIDE LAND FOR THE CO-OPERATIVE OFFICE.

CHALLENGES

The Sampark team audits the SHGs and cooperatives every year. In the SHGs, the operations are transparent and honest, and balance sheet errors, if any, arise from lack of knowledge rather than from mismanagement of the group monies. The cooperatives in Koppal are sustainable too, earning profits every year, and they all have their own land and buildings. However, Sampark needs to guide them and oversee regularly to prevent the dominance of leaders and staff, follow up on any loans over-due for repayment, and to ensure compliance with the cooperative laws of the state.

WOMEN SELF HELP GROUPS IN VARANASI

Details of Self Help Groups (SHGs)

938 women members

76 SHGs

12 villages in Chiraigaon block

The project aims to enhance the economic and social spheres of the lives of women in Varanasi. This is achieved through the formation of women's Self-Help Groups (SHGs), reaching around 900 women in 12-13 villages in the Chiraigaon block of Varanasi district. The project team builds the capacities of the SHG women and their leaders, and designs the interventions in a participatory manner, according to the needs articulated by the women themselves.

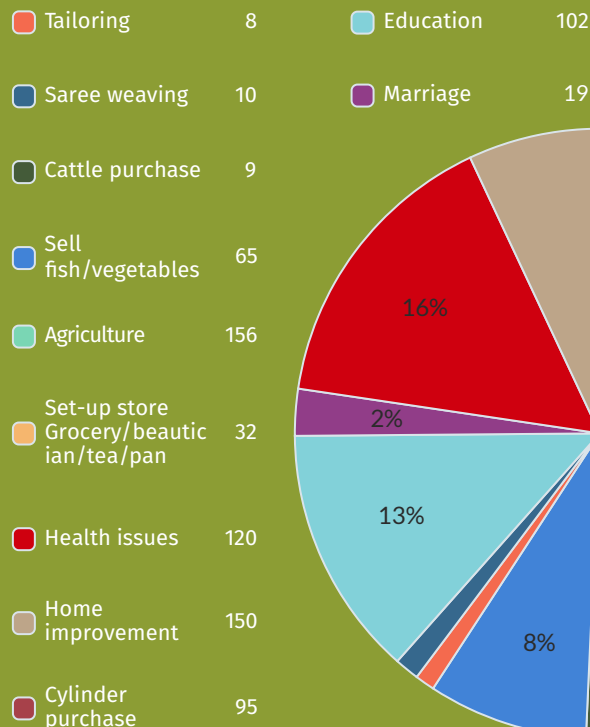
SHG members meet regularly every week and save money. They document it in the SHG books and maintain clear records of savings and loans taken by each member. The table above shows that women have earned Rs. 1,27,708 in the current year through extending loans to members from the SHGs' savings. The loans are primarily utilized for agriculture, health, education, and running small businesses such as village shops, rearing chicken and selling flowers. Women currently take loans with flexible repayment periods with the concurrence of the group.

12 villages in Chiraigaon block Chamauli, Sihwar, Newada, Tatepur, Rajapur, Raipura, Babbanpura, Hanumanpur, Khalispur, Salarpur, Kotwa and Dinapur

FINANCIAL STATUS OF SHGs IN 2019-2020

DETAILS	AMOUNT (Re.)
Total SHGs savings amount	17,78,115
Total SHGs interest amount	1,27,708
Total internal loan out standing	14,14,990
Cash in bank	71,600
Cash in hand	4,19,233

PURPOSE OF LOANS 2019-2020



766 WOMEN HAVE BENEFITTED WITH LOANS.

10 SHGs have opened bank accounts and saved Rs. 71,600.

INTERVENTIONS



SKILLS TRAINING

Women from SHGs are intensively trained in making food products for local village consumption, like blended spices for the village markets at Sampark's Varanasi office. Women have the flexibility to attend these trainings at a time and duration convenient for them. They learn to identify good quality raw material, safe usage of tools, measuring and weighing, processes involved in the safe production of ground spices as well as hygiene, and cleanliness in handling the spices.

The sessions are customized for each individual woman's capabilities, time availability, and literacy. This ensures that the women familiarize themselves with concepts of basic food processing without getting overwhelmed. A total of 30 women attended these sessions over 6 months.



GROUP OIL BUSINESS

SHG women meet every week to save money and to avail loans. Women also use this opportunity to share their stories and discuss their issues. One idea that came out of these discussions was that of collective purchase and sale of edible oil.

Households in villages consume about 3-4 litres of mustard/ refined oil per month. SHG members decided to purchase oil in wholesale i.e 4-5 tins of oil every month. A tin of oil is purchased for Rs. 1,300 and distributed among SHG members at Rs. 1,600, which is cheaper by Rs. 100 compared to the price in local shops. This way the SHGs are able to add Rs. 1,200 - 1,500 every month to their savings. 12 SHGs buy and distribute oil in their groups.

2019-2020 HIGHLIGHTS

Donors from Pangea, visited the villages in February. Women who had taken loans to establish small enterprises explained their businesses with confidence and made us all proud.



1 COMMUNITY RESOURCE PERSON (CRP)

Sampark follows a strategy for sustainability that involves building the capacities of the women from the community to run their own collectives and define their own aspirations for growth. This involves intensive engagement with interested women, within programs suited to their current capacities, constraints, and willingness to learn. Ten CRPs are identified to coordinate group meetings every week and guide the SHG members to conduct the meetings.

Sampark conducts fortnightly trainings to build capacities of CRPs in terms of their roles and responsibilities; book-keeping and maintenance of registers. Sampark monitors CRPs regularly and collects feedback from the members of SHGs. It evaluates and grades CRPs and their honorariums are calibrated according to their capacity, discipline, motivation, and leadership. This is intended to create a sense of accomplishment and pride for the women who actively make efforts to increase their skills while motivating others to perform better.

2 ENTERPRISE RESOURCE PERSON (ERP)

The ERP cadre consists of women who facilitate enterprise development in villages by providing distribution support networks for village produce. They support women to set up businesses and help them with market linkages. Sampark team conducted seven awareness and motivation sessions, in order to motivate women to take up distribution and door-to-door retailing of SHG women's products. This ensures a sustainable system of village production and distribution of local food, that is owned and operated by rural women. Past year, more than 40 women attended these sessions. Since the deeprooted patriarchy in the villages leads to reduced mobility, women are very hesitant to step forward and attend these sessions. However, these sessions will continue to take place regularly, gradually building confidence in these women.

STORIES OF CHANGE - Wheeling towards a better future

Preeti from Khalispur village in Varanasi is a young woman who attends Sampark training regularly, to learn to audit SHG books, spread health awareness, and collect data on livelihoods. She recently bought a cycle for herself so she can be more mobile, learn more and work more, thereby increasing her income. Young women like her are motivated to earn incomes and take the self help groups, creating a positive cycle of change and development.

ENTERTAINMENT SECTOR WORKERS, NEPAL

Sampark, in coordination with Raksha Nepal, aims to empower the women and girls of informal entertainment sectors by enhancing their knowledge and skills in enterprise development, financial literacy as well as increase access over resources by connecting them to monetary institutions such as women cooperatives. These women have likely survived the instances of trafficking, and violence. The entertainment sector of Kathmandu is a breeding ground for the exploitation of rural women. It consists of dance bars, massage parlors, and cabin restaurants. Work in the entertainment sector involves commercial sex work, where women are routinely exploited by establishment owners and their clients. The project is aimed at providing opportunities for alternative sustainable livelihood options for women who are victims of internal trafficking, rape, and violence. The project works with women in Kathmandu, Pokhara and Itahari. Raksha Nepal is associated with Women Workers' Protection Union (WWPU) which is a pioneer organization to take the issues of the girls and women to create advocacy and awareness against the possibility of trafficking and sexual exploitation.

ENTERPRISE TRAINING

The project aims to reach out to the vulnerable women by training the master trainers who will in turn train the women in the informal entertainment sectors. Ten master trainers were identified by Sampark and Raksha Nepal. They are trained on topics of general business, business idea generation, costing pricing, selecting a viable business idea, risk management, and business plan. Master trainers with the gained knowledge work with women in the informal entertainment sector through the support of WWPU. *This year 4,000 women have been reached out by the master trainers.*

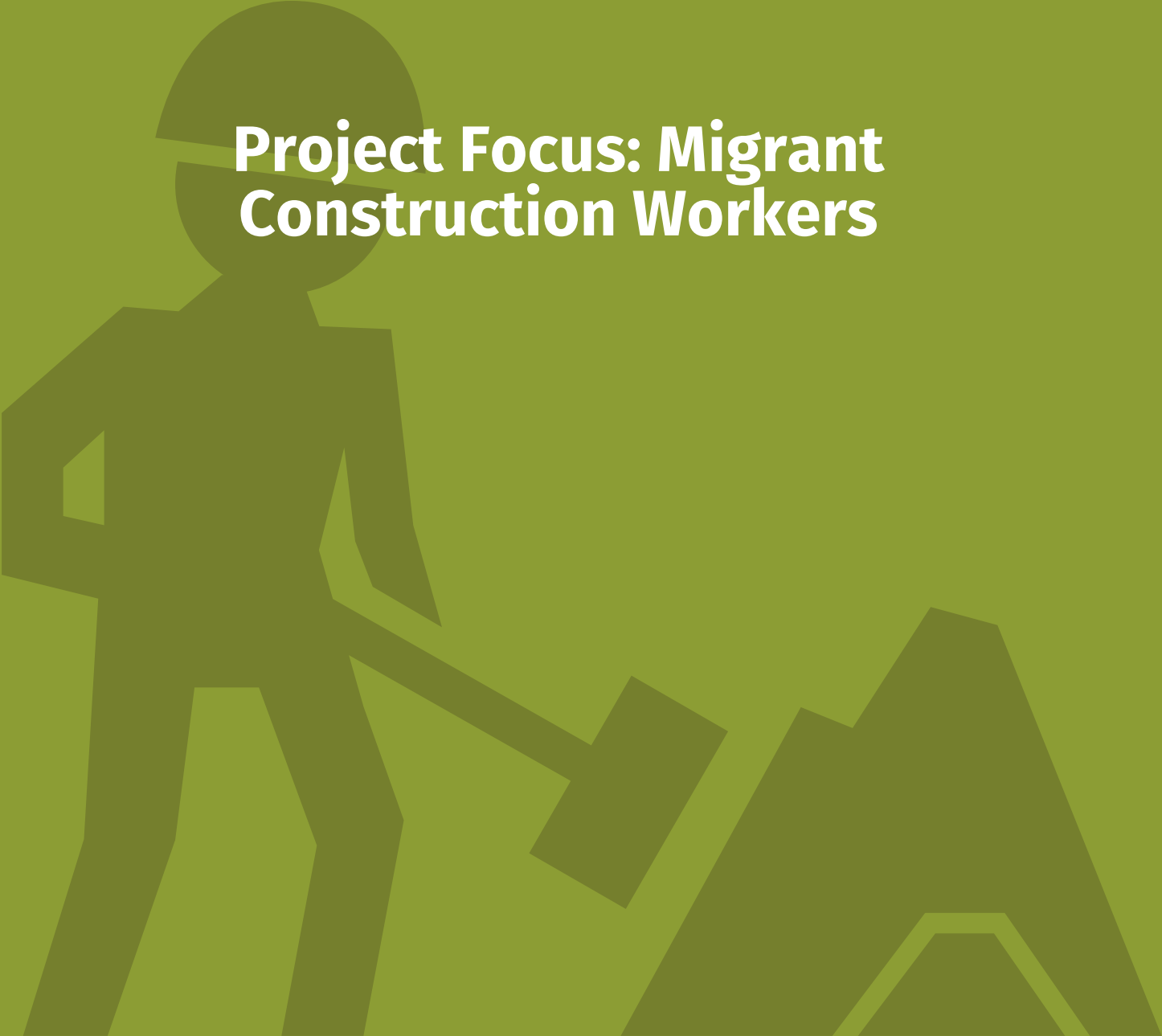


Enterprise training in progress

GENDER AWARENESS TRAINING

In May 2019, Dr. Smita Premchander from Sampark conducted a 3-day training for master trainers. Participants learned about concepts of gender and Gender-Based Violence (GBV) in special reference to the protection of rights of women working in the informal entertainment sector in Nepal and workplace safety. They also practiced session planning along with budget plans, different methodologies of session delivery, and motivating women. The training was through case/story analysis, songs, games, group discussion, lecture, and presentation. It was well received by the attendees.

"I think beneficiaries can change their behavior and be strong, confident, and bold independent women. This program is designed to bring a positive outlook. They may not start something big right after, but I strongly believe that the level of clarity in their life will definitely Enterprise training in progress increase." Seela Sigdel, Master Trainer, Pokhara.

A dark green silhouette of a construction worker wearing a hard hat and holding a hammer, standing next to a simple outline of a house. The background is a solid light green color.

Project Focus: Migrant Construction Workers

MIGRANT CONSTRUCTION WORKERS

KARNATAKA KATTADA SHARMIKARA SANGHA WAS REGISTERED WITH 130 MEMBERS IN NOV 2019

Migrant construction workers have been living invisible lives amidst the buzz and action of every city. As many as 120 million Indians migrate from villages to cities in search of work in factories, construction sites, garment units, etc. Their poverty coupled with illiteracy have made them highly vulnerable and they are often left without any voice and agency. None of the urban development plans have shown a visibility for migrant worker's access to public services or social protection schemes. The city they help to build, denies them their basic needs and does not provide solutions for their issues such as:

- Absence of low-cost shelter, water, and hygiene.
- Access to nutrition due to denial of Public Distribution System (PDS) at destination (Bangalore or any other city).
- Absence of health facilities catering to their needs and peculiar hours.

WORKER RESOURCE CENTERS

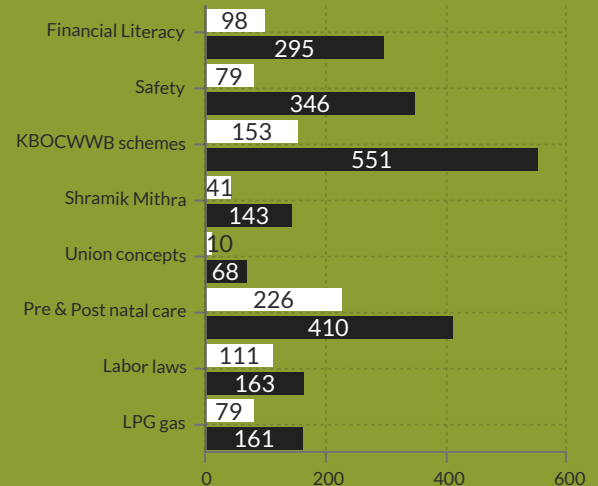
WRCs help create awareness and empower migrant workers to access their entitlements in the areas of health, education, financial inclusion, social and legal. Sampark enables the registration of workers with the Karnataka Building and Other Construction Workers Welfare Board (KBOCWWB, or the Board) to access social protection schemes. Health camps, awareness about health and hygiene, financial literacy, safety, KBOCWWB & schemes, Pre & Post-natal care, HIV/AIDS, and labour laws are conducted regularly.

Sampark has established a toll-free number 1-800-425-1080 to enable the migrant workers with access to information on their entitlements from anywhere in the city.

Sampark selects active members as Shramik Mitras who support Sampark initiatives and function as our contact person in the labor colony. Shramik Mithras meet regularly and are taught topics on communication, leadership, and union concepts.

This initiative of ours which started as a sustainability initiative enabled us to achieve our long-time dream of formation of a registered union in Karnataka for migrant workers. This marks one of the important milestones of Sampark.

AWARENESS SESSIONS 2019-2020



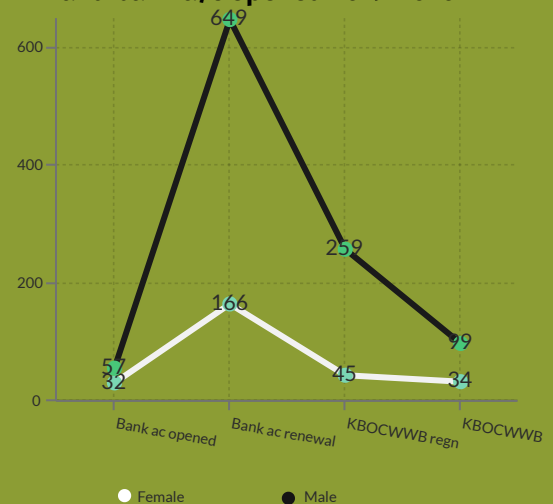
Rs. 1,11,000

RECEIVED BY MIGRANT WORKERS THROUGH KBOCWWB SCHEMES THIS YEAR.

Rs. 14,23,800

SAVED BY MIGRANT WORKERS AS 113 WORKERS RECEIVED FREE BMTC BUS PASS WORTH RS 1,050/MONTH.

Registrations for social protection schemes and bank a/c opened 2019-2020



INTERVENTIONS



HEALTH CAMPS

Migrants working at construction sites are in the age group of 20-40 years as the work is physically demanding. Their awareness of basic health and hygiene is very low and they often neglect their health for lack of time and information regarding government hospitals where they can access free medicines and treatment. Sampark conducts health camps as one of the prime interventions. These camps help the workers to get familiar with the doctors from their nearest public health centers and overcome the hesitation to visit due to unfamiliarity of language and place. Sampark has developed internal expertise to conduct HIV/AIDS awareness, pre- and postnatal care programs. Our field staff, who have undergone para-medical training, are involved in conducting these programs.

LEGAL MEDIATION

Wage disputes are common among migrant workers. Most often, they migrate to cities with the help of village kin who have already migrated. But unlike in their villages, they lack social networks in cities. This results in exploitation as they are taken for a ride by unknown contractors and employers. Paying lesser than agreed terms of pay, non-payment of wages, absconding contractors, etc are the issues faced. Sampark team intervenes and negotiates with employers, explains the labor laws, and ensures workers' rights are respected. There are cases where legal cases are filed to resolve the disputes.



23 health camps were conducted in various labour colonies in Bangalore and was attended by 2,265 workers - 649 women and 1,616 men. 133 women and 103 men were linked to Public



1 case involving 6 months pending wages for a worker was settled and he received Rs. 75,000.

2 cases for Rs. 77,935 is still pending.

2019-2020 HIGHLIGHTS

Sampark's WRC team enabled 113 workers to free BMTB bus passes under the KBOCWBB scheme. Each worker's family saved Rs. 12,600 per person per year.



1 SHRAMIK MITRAS

Sampark selects active and energetic workers from each labour colony as Shramik Mitras and trains them. Shramik mitras are Sampark's point of contact in the labour colony and help to make new workers moving into the labour colony aware about Sampark's interventions.

Exposure visits play an important part in taking the conversation further and enable the migrant workers to mobilize and form the union for construction workers. On 11th Dec 2019, 27 workers (13 male and 14 female), representing 12 construction sites were taken to Labor Department, Central Union for Construction Workers, Karnataka State Legal Authority, and to a few government hospitals. On 3rd Mar2020, 10 members of the Executive Committee of Karnataka Kattada Shramikara Sangha (UNION) went on a 2-day exposure visit to Bagalakote. They visited, Bagalkot Taluk Gruha Nirmana mathu Kattada Karmikara Sangha and Bagalkot Taluk Plumbers association and discussed how the unions are run, management of finances and how the governance is handled. These visits increased the confidence of migrant workers to interact with government officers and other officials.

2 ADVOCACY - PARTICIPATION IN PROTESTS

On 8th Jan2020, WRC team and members of Union participated in state level protests at Freedom park, Bangalore. This was organised by the All India Trade Union Congress (AITUC), Centre of Indian Trade Unions (CITU), Indian National Trade Union Congress and Labour Progressive Federation (LPF) protesting the central government's anti-labour laws and privatization attempts.

STORIES OF CHANGE

Averting a deadly illness by timely action

Sunil Das, 24 yrs old, migrated from Mograchara village, Assam to Bangalore 5 years ago. Sunil works as a helper at construction sites and earns Rs 300 per day. He developed fever one day and went to the local Public Health Centre (PHC). He took the medicines prescribed by the doctors, but fever did not come down. He contacted Sampark's field officer and discussed about his illness on a call. He was taken to Balagangadharnatha Maha Swamiji Government hospital, where the doctor advised to get a blood test. The results of blood test confirmed that he had dengue fever. He was treated for dengue for a week and eventually cured. Sampark's mediation and timely guidance paved the way for good health of the migrant worker.

Project Focus: Children of Migrant Construction Workers



Children of Migrant Construction Workers

Sampark currently runs 17 creches

- 5 new centers started this year
- 2 centers closed on completion of construction at the site



The consistent advocacy efforts of Sampark and other NGOs have resulted in the labour department accepting the need for creches for children of migrant workers. The Labour department has plans to start 100 creches all over Karnataka.

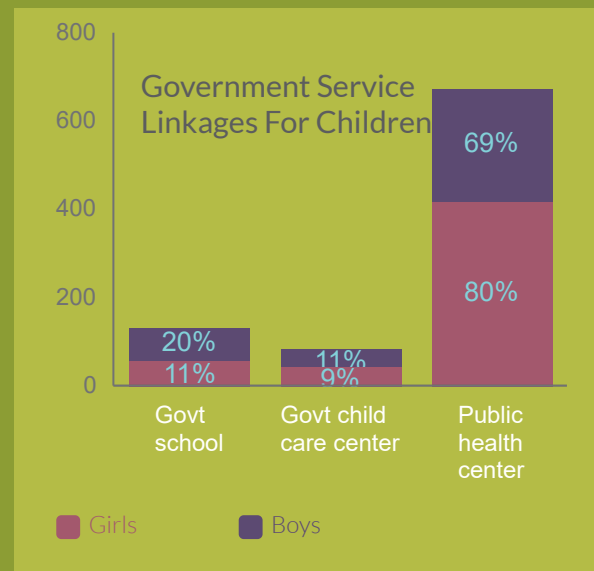
CRECHE SERVICES

- Daycare
- Nutritious meals thrice a day
- Special diet for undernourished children
- Immunization
- Multivitamins and supplements
- Age-appropriate curriculum
- Regular parent meetings

Living conditions of migrant workers are often sub-standard with no provision for clean drinking water, toilets, and sanitation (Smita et.al 2014). Often older children are left to care for younger ones and there are accidents, injuries, kidnapping, etc. The women who migrate can neither afford to leave children unattended nor absent themselves from work as they would face extreme financial hardship. Children of migrant workers between the age group of 6 months to 3 years are not provided any entitlements in any schemes of the Government. Reaching out to the children of migrant workers is the innovativeness of this project.

Sampark's interventions start when the pregnant woman is made aware of pre- and post-natal care and is linked to local government anganwadi (child care centres). Pregnant mothers receive mother cards, which helps anganwadis to track their nutrition and provide timely supplements.

Sampark establishes linkages with multi-stakeholders such as the department of health, education, associations of developers and contractors to make the children visible and claim their entitlements. Sampark also identifies active women from the community



and trains them on early childcare and development (ECD) and makes them a Sathi Samuha (local leader). Sathi Samuha supports childcare workers (teachers) in providing safety, access to immunization, nutrition, health care, and education.

HEALTH & NUTRITION

Snapshot of this year's data

- 4,155 children attended health camps - 2,165 girls and 1,990 boys
- 256 children immunized - 117 girls and 139 boys
- 674 children linked to Public Health Centers - 419 girls and 255 boys

Early years of children are extremely important in shaping their future physical, emotional and social development. Any amount of focus shown on children's health and nutrition is not wrong as it is an investment in ensuring their future successes. At Sampark, our creches' prime focus is on health and well-being of construction worker's children. Health camps are conducted monthly in the creches, wherein a general physician from the nearby Public Health Centre (PHC) visits the creche. Common physical ailments such as cold, fever, anemia, diarrhea, pneumonia, pyoderma (skin infection) and Urinary Tract Infection (UTI) are identified and appropriate treatments given. Age-appropriate immunization and polio drops are also provided. All children are provided Iron and Vitamin E supplements. All these efforts ensure children stay healthy and enjoy their learning in creche.



Special diet of anaj misran (protein mix), eggs, bananas, milk (twice), extra portion of lentils are provided to children. 61 girls and 74 boys have improved their health and are full of smiles thanking Sampark creche teachers! Parent-teacher meetings are integral part of creche activities and this year meetings were conducted in all 17 centers. These sessions help to communicate the importance of good hygiene and nutrition. Nutrition camps are organized in creches in which simple recipes of healthy and nutritious food are introduced to migrant workers.



22% of girls and 18% of boys were put on a special diet.

STORIES OF CHANGE

Impact of early child-care interventions

Bhagyalakshmi and Bannappa migrated from Raichur in Karnataka and worked as helpers at construction sites. Bhagyalakshmi gave birth to Maheshwari and couldn't work after child-birth as Maheshwari was developmentally delayed. The couple was hesitant to enroll 3 yr old Maheshwari in Sampark creche in their labour colony, as she didn't have bladder control and could not walk and talk properly. Sampark advised that doctor visits and other activities conducted in the creche would help Maheshwari in her cognitive & physical development and convinced the parents. In the creche's health camp, visiting doctors trained Bhagyalakshmi on simple exercises for Maheshwari. On completion of 3 months in the creche, Bhagyalakshmi shared that Maheshwari is successfully toilet-trained. She is also able to walk properly. She started eating on her own and speaks small words. Bhagyalakshmi was thankful to creche teachers and shared that she has started going to work and earns Rs. 250 per day.

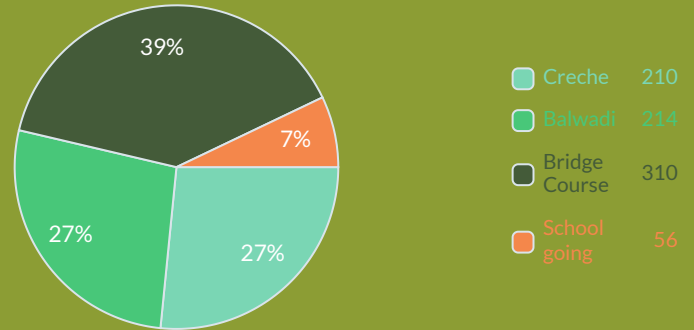
EDUCATION

Sampark creches admit children from 6 months to 6 years, however, many children of migrants between 6 – 12 years of age are out of school, and are admitted to the creche too. Children are categorized into 3 groups based on their age. This helps in handling the specific needs of every age-group. An age-appropriate curriculum is followed for Balwadi (3-5yrs), and Non-Formal Education or bridge course (6-12yrs). The bridge course is offered to children who have dropped out of school due to frequent migration. Sampark's bridge course enables teachers to enroll children above 6 yrs into government schools. Schools respond positively to children who have attended Sampark's creches, and the bridge course enables children to reach learning levels comparable to their peers. They also learn at least three languages at the creche and maintain good hygiene practices.

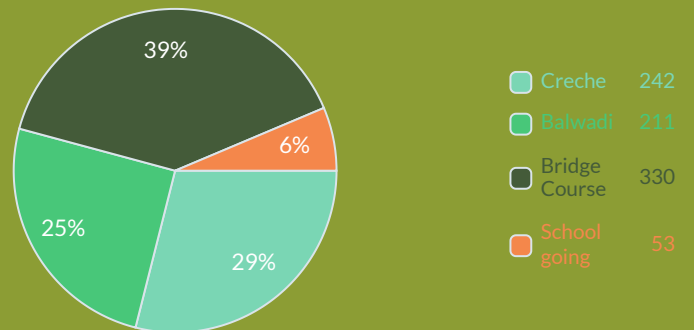
This year, 132 children were admitted into government schools – 57 (%) girls and 75 (%) boys. In addition, Sampark conducts regular meetings with the parents to update them about the children's progress. Sampark builds the capacities of its creche team through technical support from Mobile Creche, and a group of teachers in the UK. The trainings have included concepts of early childhood care, content, and technique.



CATEGORY-WISE SPLIT OF GIRLS IN CENTERS



CATEGORY-WISE SPLIT OF BOYS IN CENTERS



COMMUNITY AWARENESS

Sampark has set up creches on 17 of the construction sites where it works with migrants. The creches form a natural hub for holding weekend meetings with the parents, to build up a cadre of volunteers for the creches, the Sathi Samuhas. The awareness sessions also include monthly meetings to understand the barriers that migrant workers face in admitting their children to government schools, or the health infrastructure in the labour settlement, and the possible solutions. The creches also form the central places in the labour colony for celebration of festivals and generating the community spirit.

2019-2020 HIGHLIGHTS



1 TRAINING FOR CRECHE TEACHERS

In August 2019, we had friends of Sampark visiting us from Scotland. Agnes, Issi, Judy and Sandra all teachers with government schools in Scotland, with support of their community in Beith visited Bangalore. They provided training and shared teaching methods followed in Scotland, which offered great insights for the Sampark creche teachers. Some key take aways from the training were: gauge how children feel by a process of "checking in", importance of proper meal for children and online platforms of educational resources to use in creche activities.

In May and Dec 2019 creche teachers attended 12 days training provided by Mobile Creche Trainers. They trained teachers on the importance of documentation, age-appropriate teaching techniques and an introduction to the curriculum.

1406

parents attended
nutrition camps

917

workers contacted
creches for queries
on their entitlements

2 FORMATION OF A COLLECTIVE FORUM FOR ADVOCACY

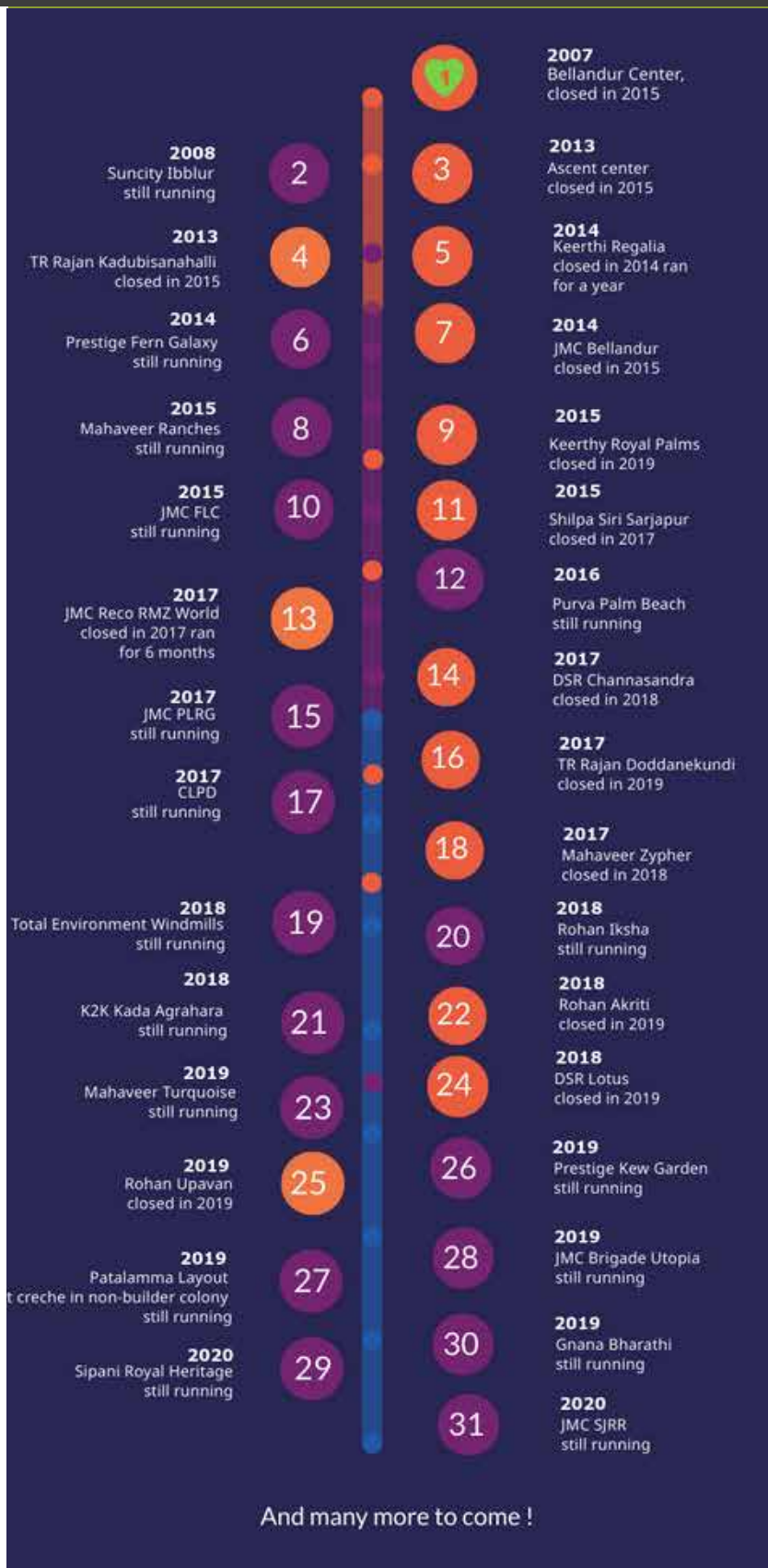
Sampark and Mobile Creches came together with NGOs from all over India to form a National Consortium for Children of Construction Sites (NC3S). The objectives of the forum were to help in advocacy, on issues related to children through consultation, meetings, awareness sessions with builders, developers, government departments, CREDAI, and others. The members appointed Sampark as the convener of the consortium.

On 4th Oct 2019 regional partners of NC3S in Bangalore, organized the regional consultation on building a case for creches for children at construction sites, with the support of Mobile Creches, New Delhi.

The chief guests at the meeting were Mrs. K. Leelavathi IAS, Director, Integrated Child Protection Scheme (ICPS), and Mr. Anthony Sebastian, Chairperson, Karnataka State Commission for Protection of Child Rights (KSCPCR).

Sampark's creches are frequented by friends, interns, volunteers, and donors. Over 70 visitors came to the centres this year pampering children with toys, stationeries, and snacks! Locate Sampark's creches here: <https://www.sampark.org/locate-centers/>

JOURNEY OF SAMPARK CRECHES



THE WAY FORWARD



In these unprecedented times, while some have the luxury to stay at home and take care of their work, the same cannot be said for people living on the margins. The COVID-19 outbreak has had a grave impact on daily wagers and migrant construction workers by shutting down income streams and wiping out savings. Most SHG women are daily wagers who are engaged in activities like agricultural labour, flower selling, fish selling, vegetable selling, and construction labour. Many of these income streams have either been reduced or cut off completely.

In Bangalore, an extensive number of migrant workers from Odisha, Rajasthan, Bengal, Bihar, Jharkhand, and Chhattisgarh need our immediate support. A majority of these workers stay alone while their families are in their villages. They are experiencing mental trauma due to the separation from their families and their inability to support their loved ones in this critical situation. Sampark creches are closed temporarily due to the COVID-19 outbreak. Children, part of Sampark creches are deprived of regular meals and are facing the risk of malnourishment.

Sampark plans to support migrant workers and rural women with grocery relief kits and hygiene kits. With construction work getting affected, and with no wages, migrant families are starving. Sampark team is geared up to stay in touch with migrant workers and rural women through community leaders. It becomes imperative to create new channels of communication to keep them informed and aware of the disease and the precautions. Interventions have to be dynamic to accommodate the needs and understand the issues of the vulnerable. Sampark remains committed to strengthen the voices of the vulnerable and enable them to improve their incomes.

“Sampark's commitment to strengthen the voices of the vulnerable will never stop.”

PEOPLE WHO SUPPORT OUR WORK !

FOUNDATIONS WE WORK WITH

- Azim Premji Philanthropic Initiatives (APPI)
- Jochnick Foundation, Netherlands.
- Mobile Creches for Working Mothers Children, New Delhi, India.
- Fondazione Pangaea Onlus Switzerland
- Norwegian Human Rights Fund (NHRF)

CORPORATE DONORS

In Cash

Apttus Software Private Limited
SG Analytics
Tarimela Advisors Private Limited
Torrent Power

In Kind

Hope Foundation
Rotaract Club of Bangalore
Selco Foundation

IN PARTNERSHIP WITH

DSR Infrastructure Pvt. Ltd
JMC Projects India Ltd
Keerthi Estates Pvt. Ltd
Reddy Structures Pvt. Ltd
Rohan Developers Pvt. Ltd
Total Environment Developers
Systems Pvt. Ltd
Arcadis Consulting India Pvt. Ltd,
TR Rajan Constructions
Suncity Corporate Leisure and
Property Developers Pvt. Ltd
K2K developers
Shirke Construction Private Ltd.
Sipani Constructions
Krishnamurti Foundation India
Rajghat Education Center

THANK YOU

SAMPARK TEAM

Bangalore - Head office

Ms. V. Prameela
Ms. Krupa Sriram
Ms. M. Shameem Banu
Ms. K.G. Meenakshi

Koppal

Mr. Manjunatha Hosalli

Varanasi

Ms. Deepika Pingali
Ms. Ankita Sen
Mr. Manish Kumar Singh
Ms. Manisha Nishad

Bangalore - Workers Resource Centre

Mr. C. Harish
Mr. John. P. Moses
Ms. Manjula Chandra
Mr. M. Sundar
Ms. Stella Catherine
Ms. S. Mangala
Mr. N. Kiran

Bangalore - Creches

Ms. Mahadevi.H. Gorpade
Ms. M. Latha
Ms. Prema
Ms. Ambika
Ms. Bharani
Ms. Chandarakala
Ms. Chandrika.G.P
Ms. Dhanalakshmi
Ms. Fayazunissa
Ms. Kavya. S
Ms. Komal
Ms. Lakshamma
Ms. Lakshmi Basavaraju
Ms. Lakshmidevi.V
Ms. Laxmi Kandagul
Ms. Nagaratna
Ms. Nagaveni
Ms. Nagaveni. V
Ms. Nandhini
Ms. Neha Anjum
Ms. Nethravathi.L.V

Bangalore - Creches

Ms. Poornima.P
Ms. Prema Ganapathy
Ms. Rakshitha
Ms. Reshma
Ms. Roopa C
Ms. Saraswathy
Ms. Shalini
Ms. Sharada
Ms. Shilpa VR
Ms. Shilpasri
Ms. Soni
Ms. Srilakshmi.J
Ms. Sujatha K
Ms. Sujathamma.V
Ms. Suman.K.H
Ms. Vasantha. A
Ms. Vidhya

ASSOCIATES

- Ms. Aindrila Mokkalpati
- Ms. Tatenda Makenza
- Ms. Sanjari Chatterjee
- Shift Media
- Green Reef Pvt Ltd.
- Abhiyaan
- Danamojo

ADVISORS

- Ms. Agnes Kennedy
- Ms. Dinah Bennett
- Ms. Isabelle
- Ms. Judy
- Mr. Neeraj Chandra
- Ms. Nicola Scott
- Ms. Sandra
- Mr. Shashi Sachdeva

INTERNS

- Chiara Maselli, Bern, Switzerland
- Joseph Padikkala
Symbiosis Law College, Hyderabad
- Aswin. S. Kottavam
School of Social work, Mariam College Kuttikanam
- Noel John Siby
School of Social work, Mariam College Kuttikanam
- Johns Joseph, Mariam College Kuttikanam
- Anoop Joseph, Mariam College Kuttikanam



www.sampark.org



www.facebook.com/sampark.org



www.instagram.com/samparkngo



[www.youtube.com/channel/
UC_QNBN_1jZCQ8n7c7eH-5HQ](https://www.youtube.com/channel/UC_QNBN_1jZCQ8n7c7eH-5HQ)
sampark org



www.linkedin.com/in/sampark-ngo-378b50105



twitter.com/samparkngo

Address:

Sampark
#39, 1st Avenue, Teacher's Colony
1st Block Koramangala
Bengaluru, Karnataka 560034
Phone - +91080 2553 0196
Email - sampark@sampark.org